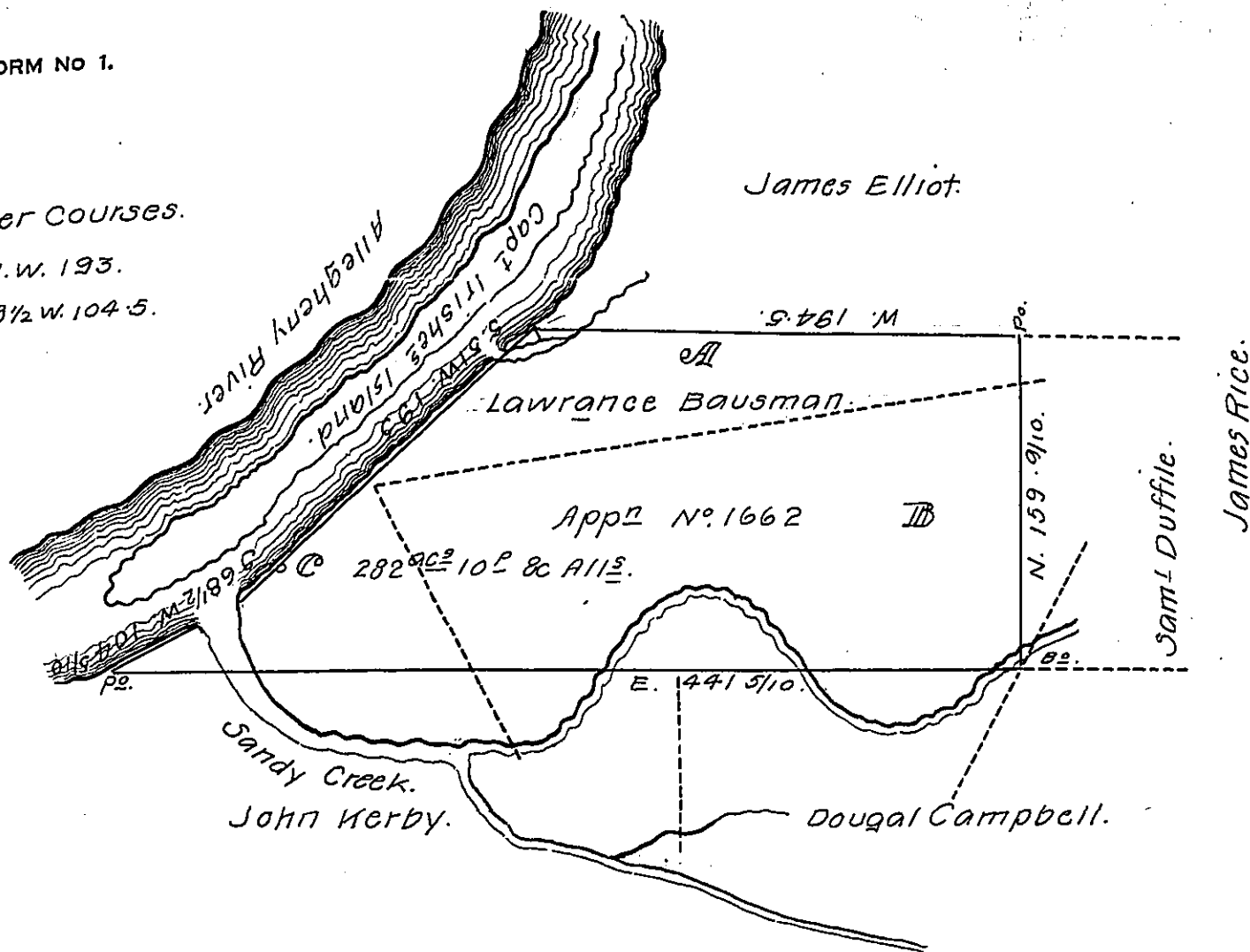


River Courses.

S. 51. W. 193.

S. 68 1/2 W. 104 5.



In pursuance of a contract of the first of Nov^r 1827. with the members of the Board of Property of the State of Penn^a & the Authority therein stated, There was surveyed & calculated by virtue of App^d N° 1662 by the Proprietary Government to Lawrance Bausman the 3^d of Apr^l 1769. The above Tract of Land, situate in Wilkins Township Allegheny County, Containing two hundred & Eighty two Acres & allowance of six per cent.

Gabriel Hiester, Jr. Esq^r,
 Surve^r Gen^l Penn^a.

Robt. Beatty,
 June 23^d 24th 1828.

M.B. The above survey represented by the letter A Interferes with^g survey of Saml Duffield executed 17th Nov^r 1784 on warrant of 16th Sept^r 1772
 B Interferes with the survey of George Duffield on Warrant of 16th Sept. 1772 executed 17th Nov^r 1784 both of the above^{are} said to be patented.

IN TESTIMONY that the above is a copy of the original remaining on file in the Department of Internal Affairs of Pennsylvania, made conformably to an Act of Assembly approved the 16th day of February, 1833, I have hereunto set my Hand and caused the Seal of said Department to be affixed at Harrisburg, this eleventh day of November 1908.

Henry Howett
 Secretary of Internal Affairs.